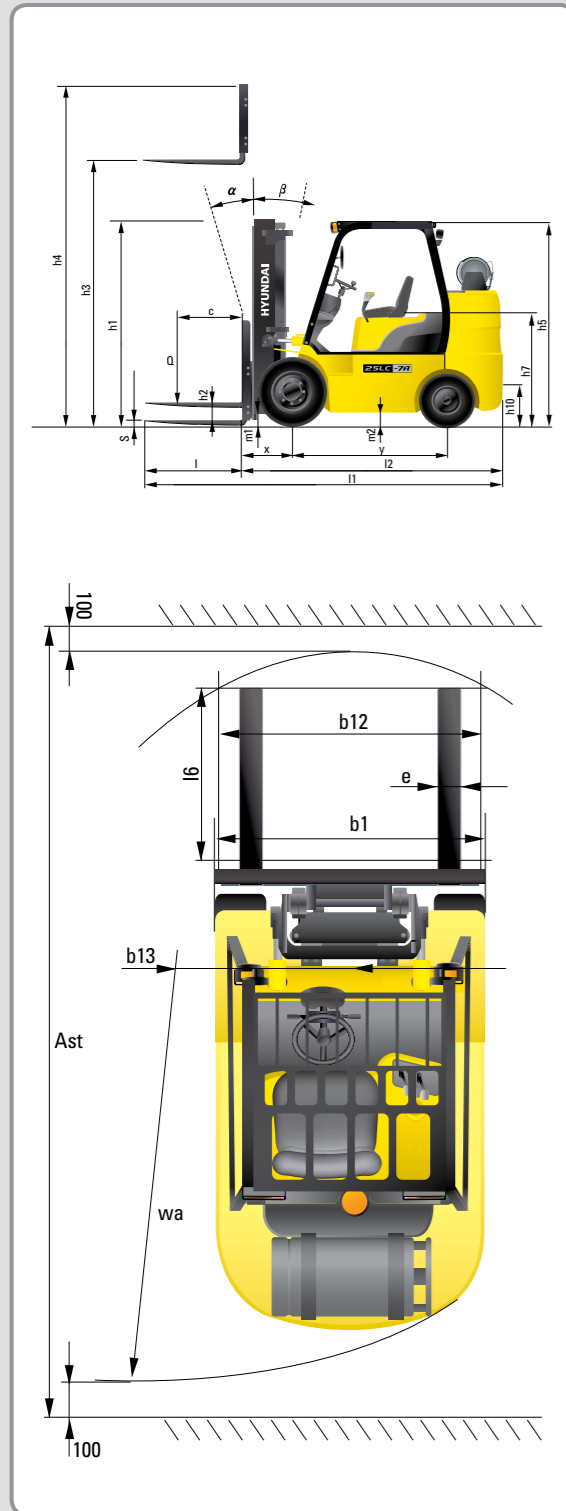


## Dimension



## Specification

Identification			
1.1	Manufacturer	Hyundai	Hyundai
1.2	Manufacturer's type designation	25LC-7A	30LC-7A
1.3	Drive: electric (battery or mains), diesel, petrol, fuel gas, manual	LP / Gas	LP / Gas
1.4	Type of operation: hand, pedestrian, standing, seated, order-picker	seated	seated
1.5	Load capacity / rated load	Q (kg)	2,500
1.6	Load center distance	c (mm)	500
1.8	Load distance, center of drive axle to fork	x (mm)	458
1.9	Wheelbase	y (mm)	1,410
Weights			
2.1	Service weight	kg	3,753
2.2	Axle loading, loaded front/rear	kg	5,502 / 751
2.3	Axle loading, unloaded front/rear	kg	1,353 / 2,400
Wheels, Chassis			
3.1	Tires: solid rubber, superplastic, pneumatic, polyurethane	Solid rubber	Solid rubber
3.2	Tires size, front (width x $\Phi$ )	21 x 7 x 15	21 x 8 x 15
3.3	Tires size, rear (width x $\Phi$ )	16 x 6 x 10 1/2	16 x 6 x 10 1/2
3.5	Wheels, number front x rear (x=driven wheels)	2 x 2	2 x 2
3.6	Track width, front	b10 (mm)	890
3.7	Track width, rear	b11 (mm)	910
Basic Dimensions			
4.1	Mast / fork carriage tilt forward / backward ( $\alpha / \beta$ )	degrees	6 / 10
4.2	Lowered mast height	h1 (mm)	2,135
4.3	Free lift	h2 (mm)	115
4.4	Lift height	h3 (mm)	3,300
4.5	Extended mast height	h4 (mm)	4,485
4.7	Overhead load guard (cab) height	h5 (mm)	2,080
4.8	Seat height / standing height	h7 (mm)	1,040
4.12	Coupling height	h10 (mm)	225
4.19	Overall length	l1 (mm)	3,365
4.20	Length to face of forks	l2 (mm)	2,315
4.21	Overall width	b1 (mm)	1,065
4.22	Fork dimensions	s / e / l (mm)	1,050 x 100 x 45
4.23	Fork carriage ISO 2328, class / type A,B	II / A	III / A
4.24	Fork-carriage width	b12 (mm)	1,022
4.31	Ground clearance, loaded, under mast	m1 (mm)	90
4.32	Ground clearance, centre of wheelbase	m2 (mm)	115
4.33	Aisle width for pallets 1000x1200 crossways	Ast (mm)	3,710
4.34	Aisle width for pallets 800x1200 lengthways	Ast (mm)	3,910
4.35	Turning radius	Wa (mm)	2,080
4.36	Smallest pivot point distance	b13 (mm)	594
Performance Data			
5.1	Travel speed, Unloaded	km/h	16.0
5.2	Lift speed, Loaded/Unloaded	mm/s	600 / 610
5.3	Lowering speed, Loaded/Unloaded	mm/s	500 / 450
5.5	Drawbar pull, Loaded	kg	2,599
5.7	Gradient performance, Loaded	%	41.2
5.10	Service brake		Foot (Hydraulic)
Engine			
6.1	Engine manufacturer / type	HMC L4KB	HMC L4KB
6.2	Engine power acc. to ISO 1585	PS	60
6.3	Rated speed	1/min	2,300
6.4	No. of cylinder / cubic capacity	/cm <sup>3</sup>	4 / 2,359
Other Details			
8.2	Type of drive control	Power Shift	Power Shift
8.3	Operating pressure	bar	220 / 165
8.4	Oil volume	l/min	30
8.5	Noise	db(A)	80



Some of the photos may include optional equipment.

HYUNDAI LPG/GASOLINE FORKLIFT TRUCKS **Applied Tier 4 Engine**

# 25LC/30LC-7A

# 25GC/30GC-7A

**HYUNDAI FORKLIFT**  
HEAVY INDUSTRIES CO.,LTD.

Head Office(Sales Office)  
14th FL., HYUNDAI BLDG. 140-2, KYE-DONG, JONGNO-GU, SEOUL, KOREA 110-793  
Tel (82) (2) 746-4526, 4529 Fax (82) (2) 746-7444-7445

Americas Operation: Hyundai Construction Equipment Americas, Inc.  
6100 ATLANTIC BOULEVARD NORCROSS GA 30071 U.S.A TEL: (1)847-678-823-7802 FAX: (1)847-678-823-7778

Europe Operation: Hyundai Heavy Industries Europe N.V.  
VOSSENDAAL 11, 2440 GEEL, BELGIUM Tel (32) 14-56-2200 Fax (32) 14-59-3405

PLEASE CONTACT

www.hyundai-ce.com

2011. 12 Rev 1.

**HYUNDAI**  
HEAVY INDUSTRIES CO.,LTD.

We build a better future





# NEW criteria of Forklift Trucks

Hyundai introduces a new line of 7A series LPG / Gasoline forklift trucks. Excellent power and performance make your business more profitable.



### OPSS (Operator Presence Sensing System)

Control of mast tilting, lifting and lowering is not possible through operation of the appropriate control when the operator is not in the seated position. (Option)

■ Some of the photos may include optional equipment.



## The new master on the job-site!

Smooth running, efficient and ergonomically designed, 25LC/30LC-7A, 25GC/30GC-7A series are made to meet your needs.

**60PS/2,300rpm**



### Powerful Engine HMC L4KB(2.4L) Engine

Market approved quality of HMC L4KB engine ensures incomparable performance, durability and additional value to the machine. Powerful and efficient engine provides excellent fuel economy and excellent torque for improved operation.(EPA/CARB Tier-IV Certified)

### Fast and Stable Performance

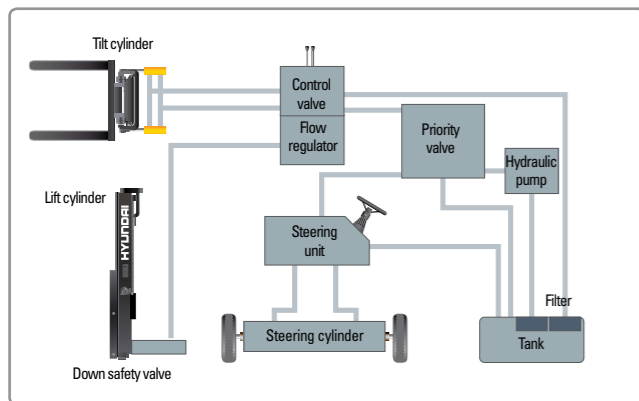
Being able to quickly raise and lower the mast, as well as tilt it forward and backward, provides the best operational conditions during unloading.

When the truck is fully loaded, mast lowering speed is carefully controlled to ensure safety by the down control valve.

Mast, Lift and Tilt Lock System. (Option)



Some of the photos may include optional equipment.



### State-of-the-art Hydraulic System

The latest large-capacity hydraulic system reacts quickly during operation, and a low-noise control valve increases both efficiency and durability.



### Fully Hydrostatic Power Steering

A hydraulic steering system always guarantees smooth and flexible steering, preventing overrun and kick-back.



### Increased Mast Tilting Angle

Utilizing the mast tilting angle of 6 degrees forward and 10 degrees backward, the operator can safely and rapidly perform loading and unloading jobs.

### Faster Travel Speed & Better Gradability

The powerful high-output engine provides greater acceleration, better gradability and faster travel speed on any tough terrains or slopes.



### Gradability(Loaded)

25LC-7A/25GC-7A : 41.2°  
30LC-7A/30GC-7A : 34.2°

### Travel Speed(Unloaded)

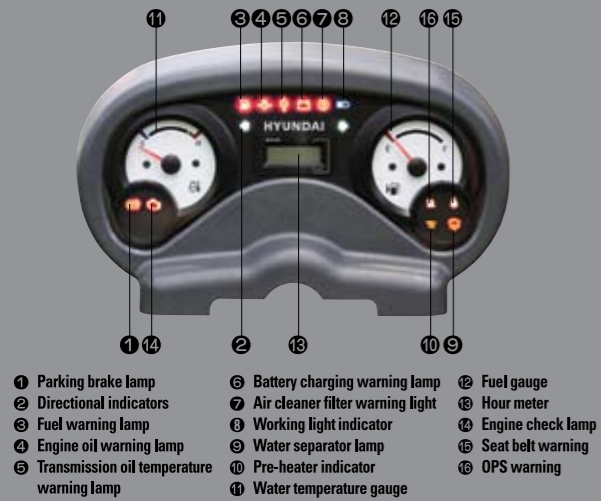
25LC-7A/25GC-7A : 16.0km/h  
30LC-7A/30GC-7A : 16.0km/h



## Ergonomic operator friendly compartment design!

A design based on human engineering relieves fatigue and increases operator's efficiency.

### Operator Friendly Gauges and Water-resistant Monitor Panel



### Grammer Seat (Option)



- Quick Achievement of the Ergonomically Best Sitting Position
- Asymmetrical Backrest
- Movable Armrests
- Seat Heating
- Practical Document Box



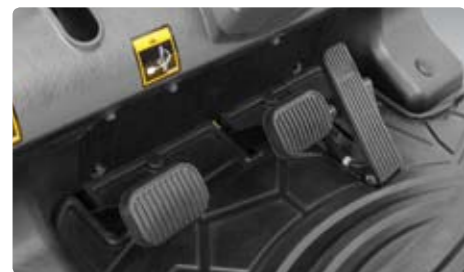
**New High Visibility for Safe Operation**  
The operator is able to work with increased safety and accuracy due to a wider view mast.



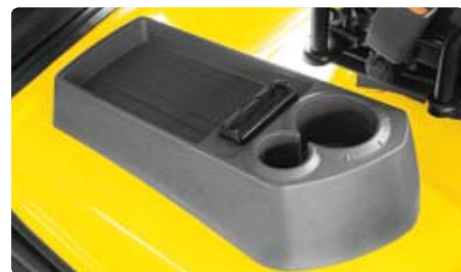
**Travel Speed Control System (Option)**

- ← In-Door : Max. Travel Speed 8 ~ 10 km/h
- ← Out Door : Max Vehicle Travel Speed

Some of the photos may include optional equipment.



**Ergonomically Positioned Pedals**  
Based on human engineering, the accelerator, brake and inching pedals are optimally positioned for convenience while operating the equipment.



**Cup Holder & Console Box**  
Additional storage spaces are located inside the operating space for operator's convenience.



**Quick Response of Operating Control Levers**  
Only minimal operator's effort is required for precise, safe and productive control.



**Adjustable Steering Wheel**  
Steering wheel with horn button can be adjusted by a lever on the right-hand side for the most comfortable operator position.



**Easy and Safe Shift Lever**  
A single lever on the left side of the steering column gives the operator fast, easy control of direction. The lever must be in the neutral position before the engine can be started.



**Secondary Horn**  
Secondary Horn gives access to lights and horn



## Danger-free through high durability!

Safety and durability are priorities in design of the equipment.



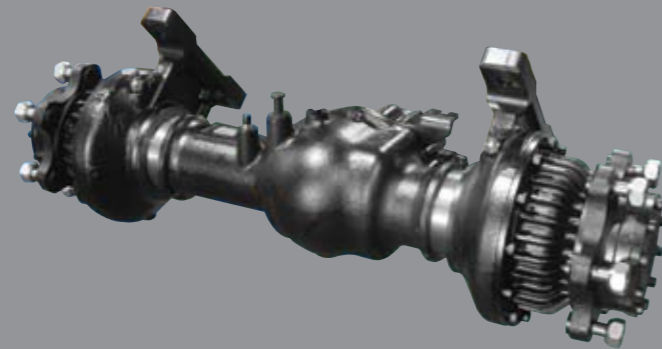
### Strong Overhead Guard

The safety overhead guard meets ISO 6055 regulation and protects the operator during hazardous jobs.



### Parking Brake

Ratchet type parking brake requires less effort from the operator to set.



### Highly Durable Split Type Drive Axle

The bevel gear set and hub reduction axle smoothly delivers desired torque to the drive wheels.



■ Some of the photos may include optional equipment.



### Large Footboard & Hand Grip

Wide "open" step offers convenience and safety when entering and exiting truck.



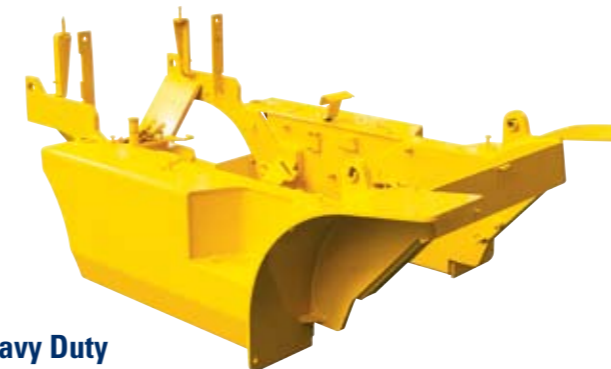
### Expansion Bellows

The expansion bellows absorbs vibration and reduces noise generated from the exhaust system and also extends the life cycle of exhaust system.



### Electrically Monitored Air Filter

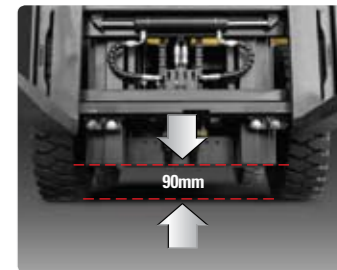
Air cleaner sensor alerts the operator of a restricted air filter and allows replacement before damage.



**Heavy Duty Single Unit Frame**  
Heavy duty single unit type frame, designed on the basis of accurate structural analysis, guarantees durability and safety.



**Bright, Protected Headlights**  
Bright, Protected head lights are positioned for exceptional visibility.



**Ground Clearance**  
The engine and transmission are assembled horizontally and positioned high in the frame to protect major components during operation on rugged surface.



# Designed for quick and easy service!

An ideal arrangement of component parts ensures easy access and convenience for maintenance.



### Easy Change Air Cleaner

The air filter is readily accessible for cleaning or replacement. (6inch Cyclone Type)



### Fast Service Access for Daily Fluids Check



Rotational Battery Installation



One Touch, No Tool Floor Plate



Removable Side Panels for Ease of Service



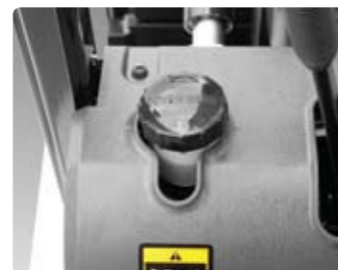
### Improvement in Maintenance of Electric Parts

Various electric parts are centralized in dash board resulting in effortless troubleshooting.



### Easy Maintenance Oil Check

The T/M oil level can be checked easily without any disassembly.



### Brake Fluid Reservoir

Highly visible, easily accessible reservoir makes for quicker daily inspections.



### An Accessible, Compact Fuse Box for Easy Inspection

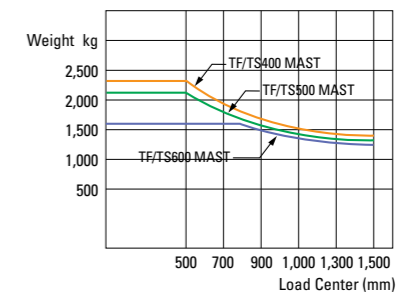
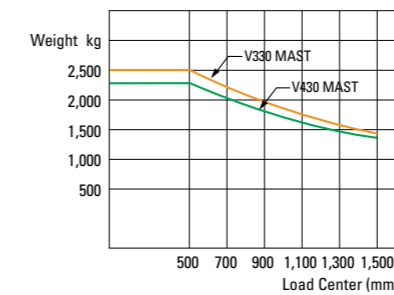
## Mast Specification

Mast Type	Maximum Fork Height (mm)	Overall Height Lowered (mm)	Tilt Angle (deg)		Free Lift (mm)				Load Capacity w/o Integral Side Shift 500mm LC (kg)		Load Capacity w/ Integral Side Shift 500mm LC (kg)		Truck Weight Unload (kg)		
					With Backrest		With/o Backrest		Single Tire		Single Tire		Single Tire		
			Fwd	Bwd	25LC-7A 25GC-7A	30LC-7A 30GC-7A	25LC-7A 25GC-7A	30LC-7A 30GC-7A	25LC-7A 30LC-7A	25GC-7A 30GC-7A	25LC-7A 30LC-7A	25GC-7A 30GC-7A	25LC-7A 25GC-7A	30LC-7A 30GC-7A	
2-Stage Limited Free Lift	V209	2,090	1,530	10	6	115	115	115	115	2,500	3,000	2,500	3,000	3,669	4,150
	V300	3,000	1,985	6	10	115	115	115	115	2,500	3,000	2,500	3,000	3,733	4,221
	*V330	3,300	2,135	6	10	115	115	115	115	2,500	3,000	2,500	3,000	3,753	4,242
	V350	3,500	2,235	6	10	115	115	115	115	2,500	3,000	2,500	3,000	3,770	4,260
	V370	3,700	2,385	6	10	115	115	115	115	2,500	3,000	2,500	3,000	3,792	4,284
	V400	4,000	2,535	6	10	115	115	115	115	2,500	3,000	2,500	2,975	3,822	4,316
	V430	4,300	2,685	6	10	115	115	115	115	2,475	2,950	2,425	2,900	3,868	4,363
	V450	4,500	2,835	6	5	115	115	115	115	2,425	2,900	2,400	2,850	3,896	4,393
	V470	4,700	2,935	6	5	115	115	115	115	2,400	2,850	2,375	2,800	3,910	4,409
V500	5,000	3,085	6	5	115	115	115	115	2,350	2,800	2,325	2,750	3,932	4,432	
3-Stage Full Free Lift	TF370/TS370	3,700	1,785	6	5	605	605	1,177	1,114	2,500	2,950	2,450	2,900	3,869	4,354
	TF400/TS400	4,000	1,885	6	5	705	705	1,277	1,214	2,425	2,900	2,400	2,850	3,891	4,395
	TF430/TS430	4,300	1,985	6	5	805	805	1,377	1,314	2,375	2,825	2,350	2,800	3,909	4,417
	TF450/TS450	4,500	2,085	6	5	905	905	1,477	1,414	2,350	2,800	2,325	2,750	3,931	4,443
	TF470/TS470	4,700	2,135	6	5	955	955	1,527	1,464	2,325	2,750	2,300	2,725	3,945	4,457
	TF500/TS500	5,000	2,235	6	5	1,055	1,055	1,627	1,564	2,275	2,700	2,225	2,650	3,967	4,480
4-Stage Full Free Lift	TF550/TS550	5,500	2,435	6	5	1,255	1,255	1,827	1,764	2,175	2,600	2,150	2,575	4,006	4,523
	TF600/TS600	6,000	2,635	6	5	1,455	1,455	2,027	1,964	1,700	1,750	1,700	1,750	4,070	4,593
	QF610	6,115	2,120	3	3	940	940	1,512	1,449	1,600	1,760	1,540	1,690	4,285	4,749
	QF660	6,615	2,320	3	3	1,140	1,140	1,712	1,649	1,500	1,670	1,440	1,590	4,345	4,808
4-Stage Full Free Lift	QF700	7,015	2,420	3	3	1,240	1,240	1,812	1,749	1,400	1,470	1,350	1,400	4,376	4,839
	QF745	7,465	2,570	3	3	1,390	1,390	1,962	1,899	1,100	1,170	1,050	1,100	4,421	4,885
	QF790	7,915	2,720	3	3	1,540	1,540	2,112	2,049	700	720	660	670	4,522	4,985

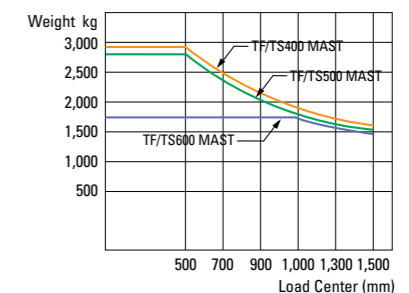
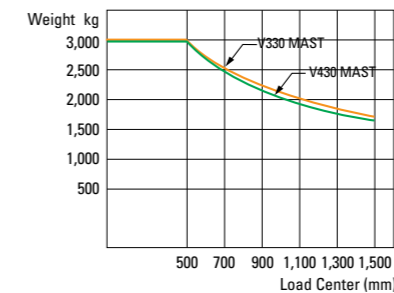
\* TS-Mast : Wide Visible 3 Stage Full Free Lift Mast with 2 Free Lift Cylinders.

## Load Capacity

25LC-7A  
25GC-7A



30LC-7A  
30GC-7A



## Optional Items

- **SIDE SHIFT**
- **INTEGRAL SIDE SHIFT**
- **FORK(mm)** : 889, 991, 1194, 1346, 1499, 1651, 1803
- **OVER SHOE(mm)** : 1295, 1499, 1702, 1803
- **TILTING** : 6/5°, 3/3°, 10/6°(Better Tilts)
- **TIRE** : Cushion, No-marking
- **SEAT** : Pocket, Arm Rest, Hip Rest
- **LPG CLAMP** : Swing Out, Swing Down
- **M.C.V** : 4-Spool
- **OPSS** : Travel + mast
- **ATTACH PIPING** : 3 Spool-piping, 4 Spool-piping
- **MASTER SWITCH**
- **BEACON LAMP**
- **HAZARD SWITCH**
- **WORK LAMP**
- **SPEED CONTROL SENSOR**